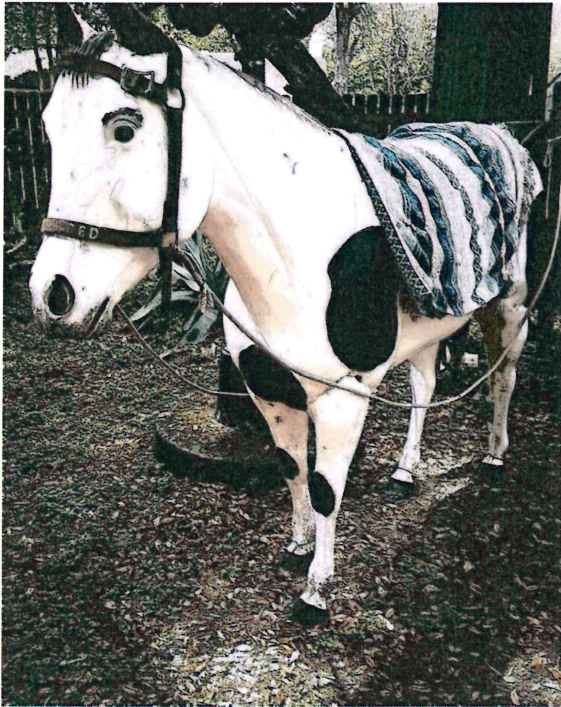


WHITEHEAD MEMORIAL MUSEUM



COLOR THE WHITEHEAD MUSEUM

Ted the Horse



LEARN

Horses were first brought to America by Spaniards in the 1500's. Native Americans started breeding horses in the early 1600's. By the time settlers came to Texas, they found large herds of wild horses roaming the lands. What we now call Mustangs were abundant and were free if you could catch them and train them. These horses were not as big as other horses, but they were very sturdy and strong animals that became

a huge part of Texas. Our horse's name is Ted. He is attached to our shepherds hut and loves to take pictures with our visitors.

IMAGINE

Do you think it was difficult to capture and train a wild horse? Why?

Before horses, people had to walk hundreds of miles to get to where they would eventually settle and build a home. Could you travel further walking or riding a horse? Why?

CREATE

Create your own horse using items from around your house such as construction paper, yarn and glue. You can also make a horse model by using your favorite modeling clay.

HI MY NAME IS TED



WHITEHEAD-MEMORIAL MUSEUM

