

## WHITEHEAD MEMORIAL MUSEUM



# COLOR THE WHITEHEAD MUSEUM

## The Perry Store



## LEARN

The Perry Store was built by John Perry in 1870. It was the first store in Del Rio and the first two story stone building in Del Rio. This store was once the largest store between San Antonio and El Paso. The store was

also used as a stage coach stop and post office. The second floor of the store was used by Val Verde County as county offices while the Courthouse was being built. It is 150 years old and is currently the general admission entrance for the museum.

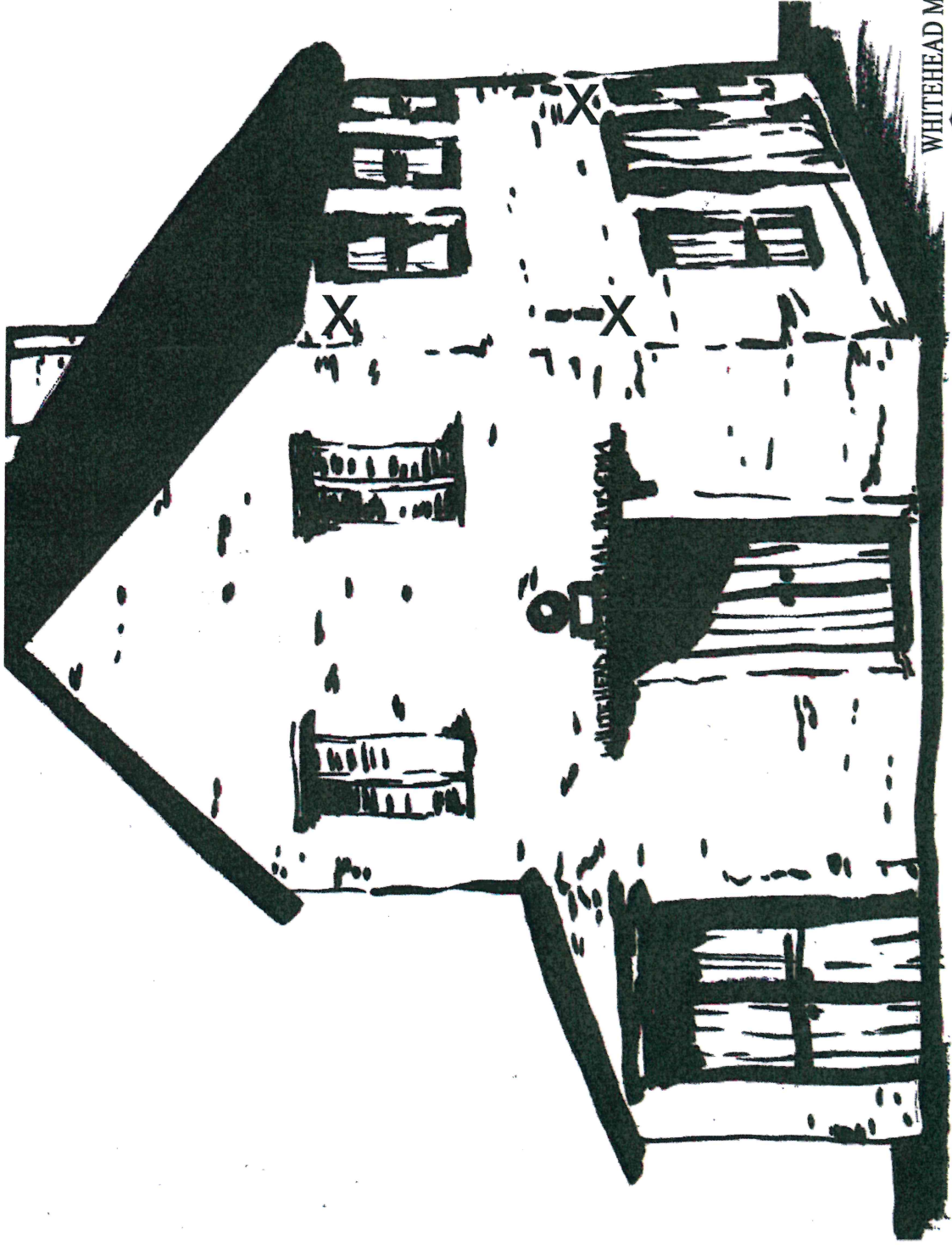
## IMAGINE

If you owned a store, what would you sell? The Perry Store is built out of stone, wood and plaster. Why do you think the building has lasted 150 years and is still standing?

## CREATE

Create your own miniature Perry Store using items from your home such as craft sticks, cardboard, rocks, and glue. Make sure it is built sturdy so it too can last 150 years!

# PERRY STORE



WHITEHEAD MEMORIAL MUSEUM

